

Troubleshooting

This section describes possible errors and suggested solutions to fix the errors.

Problem	Possible Cause	Possible Solution
The scanner is not working.	Batteries are loaded incorrectly.	Reload batteries. Make sure the (+) and (-) signs on the batteries line up with the signs inside of the battery cover.
	Batteries are dead.	Insert new batteries.
	Hardware failure.	Call Symbol Technical Support. See Service Information.
The scanner is not scanning or deleting items.	The bar code may be damaged.	Try a different bar code.
	You are too far from or too close to the bar code.	Move the scanner closer to or farther from the bar code.
	You are scanning at an incorrect angle.	Change the angle until the scanner reads the bar code.
	You are scanning an unsupported or disabled bar code type or that bar code type may be disabled in the software.	Try a different bar code. Make sure the correct bar code support is enabled.
	The scanner is connected to the PC and communication has been established.	Scanner will not scan when the communication cable is connected to the scanner and a host communications session has been started. Disconnect the cable and try again.
Stored bar code information is not transferring to the PC.	The communication cable is not connected properly.	Check that the cable is properly connected to the scanner and the PC.
	The communication software is not properly loaded or is corrupt.	Check that the communication software is loaded properly on your PC. Consult your software application guide. If necessary, reload the communication software on the PC.
	The PC serial port is not properly configured.	Consult your hardware and operating system user documentation.
LED indicator blinks red.	Low battery	Replace batteries.
LED indicator flashes red, green and amber	Hardware failure.	Call the Support Center or your reseller.

Technical Specifications

Specification	Value
Supported Symbolologies	UPC/EAN, Code 3 of 9, Code 128, I 2 of 5, D 2 of 5, Coupon Code
Storage Capability	Approximately 150 30-character bar codes
Power Requirements	4 batteries. Recommended type: <ul style="list-style-type: none"> *Energizer EPX 76 *Energizer 357 Maxell SR 44W Rayovac 357 * For best results use ENERGIZER brand batteries.
Battery Life	5,000 scans with new batteries.
Operating Temperature	5 °C to 40 °C (41 °F to 104 °F)
Operating Humidity	0 to 95% (non-condensing)
Weight	Approximately 1.8 oz. (without batteries) Approximately 2.7 oz. (with batteries)
Storage Temperature	-20 °C to 60 °C (-4 °F to 140 °F) (without batteries)

Warranty

Symbol Technologies, Inc. ("Symbol") manufactures its hardware products in accordance with industry-standard practices. Symbol warrants that for a period of 90 days from date of shipment, products will be free from defects in materials and workmanship.

This warranty is provided to the original owner only and is not transferable to any third party. It shall not apply to any product (i) which has been repaired or altered unless done or approved by Symbol, (ii) which has not been maintained in accordance with any operating or handling instructions supplied by Symbol, (iii) which has been subjected to unusual physical or electrical stress, misuse, abuse, power shortage, negligence or accident or (iv) which has been used other than in accordance with the product operating and handling instructions. Preventive maintenance is the responsibility of customer and is not covered under this warranty.

Wear items and accessories having a Symbol serial number, will carry a 90-day limited warranty. Non-serialized items will carry a 30-day limited warranty.

Warranty Coverage and Procedure

During the warranty period, Symbol will repair or replace defective products returned to Symbol's manufacturing plant in the US. For warranty service in North America, call the Symbol Support Center at 1-800-653-5350. International customers should contact the local Symbol office or support center. If warranty service is required, Symbol will issue a Return Material Authorization Number. Products must be shipped in the original or comparable packaging, shipping and insurance charges prepaid. Symbol will ship the repaired or replacement product freight and insurance prepaid in North America. Shipments from the US or other locations will be made F.O.B. Symbol's manufacturing plant. Symbol will use new or refurbished parts at its discretion and will own all parts removed from repaired products. Customer will pay for the replacement product in case it does not return the replaced product to Symbol within 3 days of receipt of the replacement product. The process for return and customer's charges will be in accordance with Symbol's Exchange Policy in effect at the time of the exchange.

Customer accepts full responsibility for its software and data including the appropriate backup thereof.

Repair or replacement of a product during warranty will not extend the original warranty term.

Symbol's Customer Service organization offers an array of service plans, such as on-site, depot, or phone support, that can be implemented to meet customer's special operational requirements and are available at a substantial discount during warranty period.

General

Except for the warranties stated above, Symbol disclaims all warranties, express or implied, on products furnished hereunder, including without limitation implied warranties of merchantability and fitness for a particular purpose. The stated express warranties are in lieu of all obligations or liabilities on part of Symbol for damages, including without limitation, special, indirect, or consequential damages arising out of or in connection with the use or performance of the product.

Seller's liability for damages to buyer or others resulting from the use of any product, shall in no way exceed the purchase price of said product, except in instances of injury to persons or property.

Some states (or jurisdictions) do not allow the exclusion or limitation of incidental or consequential damages, so the preceding exclusion or limitation may not apply to you.

Service Information

Before you use the unit, it must be configured to operate in your facility's network and run your applications.

If you have a problem running your unit or using your equipment, contact your facility's Technical or Systems Support. If there is a problem with the equipment, they will contact the Symbol Support Center:

United States	1-800-653-5350	Canada	905-629-7226	Italy	2-484441
United Kingdom	0800 328 2424	Asia/Pacific	337-6588	Mexico	5-520-1835
Australia	1-800-672-906	Austria	1-505-5794	Netherlands	315-271700
Denmark	7020-1718	Finland	9 5407 580	Norway	66810600
France	01-40-96-52-21	Germany	6074-49020	South Africa	11-4405668
Sweden	84452900	Spain	9-1-320-39-09		
Latin America Sales Support		1-800-347-0178 Inside US +1-561-483-1275 Outside US			
Europe/Mid-East Distributor Operations		Contact local distributor or call +44 208 945 7360			

Regulatory Information

Radio Frequency Interference Requirements

This device has been tested and found to comply with the limits for a Class B digital device pursuant to Part 15 of the Federal Communications Commissions Rules and Regulation. These limits are designed to provide reasonable protection against harmful interference when the equipment is operated in a commercial environment. This equipment generates, uses, and can radiate radio frequency energy and, if not installed and used in accordance with the instruction manual, may cause harmful interference to radio communications. Operation of this equipment in a residential area is likely to cause harmful interference in which case the user will be required to correct the interference at his own expense.

However, there is no guarantee that interference will not occur in a particular installation. If the equipment does cause harmful interference to radio or television reception, which can be determined by turning the equipment off and on, the user is encouraged to try to correct the interference by one or more of the following measures:

- Re-orient or relocate the receiving antenna.
- Increase the separation between the equipment and receiver.
- Connect the equipment into an outlet on a circuit different from that which the receiver is connected.
- Consult the dealer or an experienced radio/TV technician for help.

Radio Frequency Interference Requirements - Canada

This device complies with RSS 210 of Industry & Science Canada. Operation is subject to the following two conditions: (1) this device may not cause harmful interference and (2) this device must accept any interference received, including interference that may cause undesired operation.

This Class B digital apparatus complies with Industry Canada Standard ICES-003.

Cet appareil numérique de la classe B est conforme à la norme NMB-003 d'Industrie Canada.

CE Marking and European Union Compliance

Products intended for sale within the European Union are marked with the CE Mark which indicates compliance to applicable Directives and European Normes (EN), as follows. Amendments to these Directives or ENs are included:



Applicable Directives

- Electromagnetic Compatibility Directive 89/336/EEC
- Low Voltage Directive 73/23/EEC

Applicable Standards

- EN 55022:1998, Limits and Methods of Measurement of Radio Disturbance Characteristics of Information Technology Equipment
- EN 55024:1998; Information Technology equipment - Immunity characteristics - Limits and methods of measurement
- IEC 1000-4-2:1995; Electromagnetic compatibility (EMC); Part 4:Testing and measurement techniques; Section 4.2:Electrostatic discharge immunity test
- IEC 1000-4-3:1997; Electromagnetic Compatibility (EMC); Part 4:Testing and measurement techniques; Section 3. Radiated, radio frequency, electromagnetic field immunity test.
- IEC 1000-4-4:1995; Electromagnetic compatibility (EMC); Part 4:Testing and measurement techniques; Section 4:Testing electrical fast transient/Burst immunity.
- IEC1000-4-5:1995; Electromagnetic compatibility (EMC), Part 4:Testing and measurement techniques; Section 5: Surge Immunity
- IEC 1000-4-6:1996; Electromagnetic compatibility (EMC), Part 4:Testing and measurement techniques; Section 6: Immunity to conducted disturbances, induced by radio frequency fields.
- IEC 1000-4-11:1994; Electromagnetic compatibility (EMC), Part 4:Testing and measurement techniques; Section 11: Voltage Dips, Short Interruptions, and Voltage Variations.
- EN 60 950 + A1+ A2 + A3 + A4 + A11 - Safety of Information Technology Equipment Including Electrical Business Equipment
- EN 60 825-1 (EN 60 825) - Safety of Devices Containing Lasers

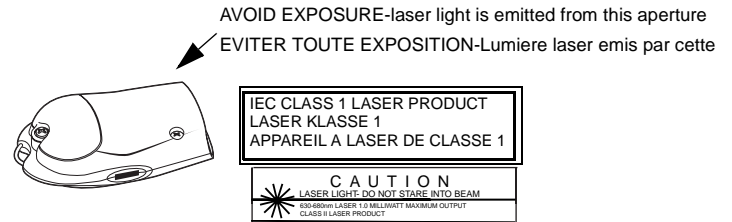
Laser Devices

Symbol products using lasers comply with US 21CFR1040.10, and IEC825-1:1993, EN60825-1:1994+A11:1996. The laser classification is marked on one of the labels on the product.

Class 1 Laser devices are not considered to be hazardous when used for their intended purpose. The following statement is required to comply with US and international regulations:

Caution: Use of controls, adjustments or performance of procedures other than those specified herein may result in hazardous laser light exposure.

Class 2 laser scanners use a low power, visible light diode. As with any very bright light source, such as the sun, the user should avoid staring directly into the light beam. Momentary exposure to a Class 2 laser is not known to be harmful.



In accordance with Clause 5, IEC 0825 and EN60825, the following information is provided to the user:

ENGLISH CLASS 1 CLASS 2	CLASS 1 LASER PRODUCT LASER LIGHT DO NOT STARE INTO BEAM CLASS 2 LASER PRODUCT	HEBREW	מוצר לייזר רמה 1 רמה 1 אור לייזר רמה 2 אין להביט אל תוך הזרם מוצר לייזר רמה 2
DANISH KLASSE 1 KLASSE 2	KLASSE 1 LASERPRODUKT LASERLYF SE IKKE IND I STRÅLEN KLASSE 2 LASERPRODUKT	ITALIAN CLASSE 1 CLASSE 2	PRODOTTO AL LASER DI CLASSE 1 LUCE LASER NON FISSARE IL RAGGIOPRODOTTO AL LASER DI CLASSE 2
DUTCH KLASSE 1 KLASSE 2	KLASSE-1 LASERPRODUKT LASERLICHT NIET IN STRAAL STAREN KLASSE-2 LASERPRODUKT	NORWEGIAN KLASSE 1 KLASSE 2	LASERPRODUKT, KLASSE 1 LASERLYS IKKE STIRR INN I LYSSTRÅLEN LASERPRODUKT, KLASSE 2
FINNISH LUOKKA 1 LUOKKA 2	LUOKKA 1 LASERTUOTE LASERVALO ÄLÄ TUUJUTA SÄDETTÄ LUOKKA 2 LASERTUOTE	PORTUGUESE CLASSE 1 CLASSE 2	PRODUTO LASER DA CLASSE 1 LUZ DE LASER NÃO FIXAR O RAIOS LUMINOSOS PRODUTO LASER DA CLASSE 2
FRENCH CLASSE 1 CLASSE 2	PRODUIT LASER DE CLASSE 1 LUMIERE LASER NE PAS REGARDER LE RAYON FIXEMENT PRODUIT LASER DE CLASSE 2	SPANISH CLASE 1 CLASE 2	PRODUCTO LASER DE LA CLASE 1 LUZ LASER NO MIRE FIJAMENTE EL HAZ PRODUCTO LASER DE LA CLASE 2
GERMAN KLASSE 1 KLASSE 2	LASERPRODUKT DER KLASSE 1 LASERSTRAHLEN NICHT DIREKT IN DEN LASERSTRAHL SCHAUEN LASERPRODUKT DER KLASSE 2	SWEDISH KLASS 1 KLASS 2	LASERPRODUKT KLASS 1 LASERSTRÅLEN INTE MOT STRÅLEN LASERPRODUKT KLASS 2



http://www.symbol.com/consumer

CS 1504 Consumer Memory Scanner

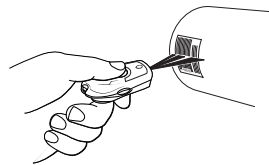


Owner's Guide

Getting Started

Scan Bar Codes (Add Items to Memory)

1. Aim the scanner at the sample bar code shown below.
2. Press and hold the large button on the scanner until you hear the tone and the blinking indicator turns solid green.



- Make sure the scanner beam covers the entire bar code and extends as far out as indicated by the end-points in the bar code below.
- The scanner should be held approximately 2.5" from the bar code and at a slight angle.



- Practice scanning this sample bar code.

Delete Bar Codes (Remove Items from Memory)

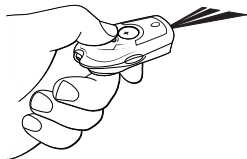
1. Aim the scanner at the bar code to be deleted from memory.
2. Press and hold the small Delete Button on the scanner until you hear a tone and the blinking indicator turns solid amber.

Note: If you scan the sample bar code above 3 times there will be 3 listings of this bar code in the CS 1504's memory. To delete all 3 listings of the bar code from memory, scan the sample bar code 3 times using the small Delete button (-) on the scanner. Upon each minus scan you will receive a single beep. When the last entry has been deleted, a long double beep will be emitted indicating all listings of that bar code have been removed from memory.

Clear All

Use the small Delete Button to clear the scanner memory of all stored items.

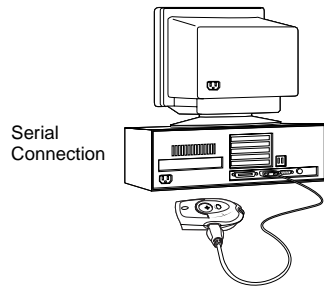
1. Aim the scanner **away** from any bar codes.
2. Press and hold the Delete Button for 6 seconds, until you hear a long beep.



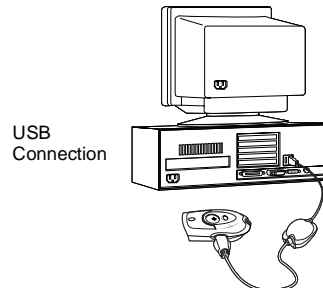
Connecting the Scanner to Your Computer

Note: Before you begin, shut down your computer according to your computer manufacturer's directions.

1. Connect the included serial (9-pin) or USB (4-pin) connector to the corresponding communication port on the back of your computer according to the manufacturer's directions. Ensure that the connection is secure.
2. Holding the other end of the communication cable with the arrow facing up, slide the connector into the data communication jack on the side of the scanner.



Serial Connection



USB Connection

Upload Bar Code Data to the Computer

To transfer bar code data from the scanner to the computer, use your third party application software to upload stored data from the scanner to your computer. (Application software is not included with the scanner.)

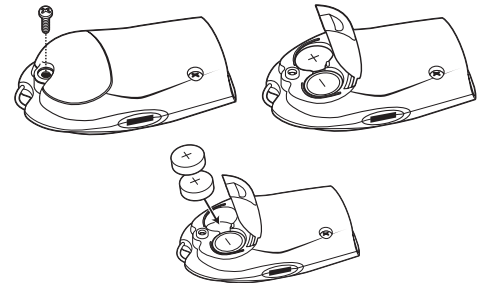
Note: The manner in which this transfer occurs depends on your specific application. Refer to your application software manual for instructions. When communication starts, the indicator blinks green and the scanner beeps.

For developers interested in writing software applications for a CS 1504, a Software Developer's Kit is available for downloading. Visit: <http://www.symbol.com/consumer> for more information.

Replacing the Batteries

When it is necessary to replace the batteries:

1. Remove screw securing the battery cover.
2. Lift battery cover.
3. Remove the old batteries.
4. Insert 4 new batteries noting the polarity.
5. Close battery cover and replace screw.



Low Battery Warning

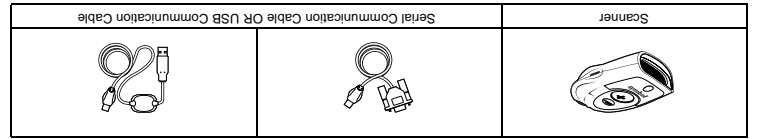
The CS 1504 will indicate a low power state to the user by blinking the LED indicator red while trying to scan a bar code.

Audio Control

To toggle the beeper tone on or off, press and hold the large button for 10 seconds until the LED indicator turns solid amber (beeper tone off) or until the LED turns solid amber and a double tone is heard (beeper tone on).

Cleaning

Clean the CS 1504 with a soft, clean cloth. Do NOT use any solvent such as alcohol or any abrasive substances.



Unpacking Your Scanner

Depending upon the configuration you purchased, the scanner is packaged with either a serial communication cable or a USB communication cable. If any items are missing, contact your reseller.



Thank you for selecting this world class, bar code memory scanner. This scanner, when combined with a third party application (software not included), allows you to capture bar codes for a variety of uses. Whether you're scanning bar codes to generate a shopping list, purchasing products, or finding information on the Internet, this scanner is the easiest data capture device to use. Simply point, and scan!

Welcome!

© 2001 SYMBOL TECHNOLOGIES, INC. All rights reserved.
 Symbol reserves the right to make changes to any product to improve reliability, function, or design.
 Symbol does not assume any product liability arising out of, or in connection with, the application or use of any product, circuit, or application described herein.
 No license is granted, either expressly or by implication, estoppel, or otherwise under any patent, product, circuit, or application described herein.
 Symbol is a registered trademark of Symbol Technologies, Inc. Other product names mentioned in this manual may be trademarks or registered trademarks of their respective companies and are hereby acknowledged.
 Symbol Technologies, Inc.
 One Symbol Plaza
 Holtsville, N.Y. 11742-1300
 http://www.symbol.com

This product is covered by one or more of the following U.S. and foreign Patents:
 U.S. Patent No. 4,460,120; 4,998,831; 4,593,186; 4,603,262; 4,607,156; 4,652,750; 4,673,805; 4,736,095;
 4,758,717; 4,816,660; 4,845,350; 4,896,026; 4,897,532; 4,923,281; 4,933,538; 4,992,717; 5,015,833; 5,017,765;
 5,021,641; 5,029,183; 5,047,617; 5,103,461; 5,113,445; 5,130,520; 5,140,144; 5,142,550; 5,149,950; 5,157,687;
 5,168,148; 5,168,149; 5,180,904; 5,216,232; 5,229,591; 5,230,088; 5,235,167; 5,243,655; 5,247,162; 5,250,791;
 5,250,792; 5,260,553; 5,262,627; 5,266,787; 5,278,398; 5,280,162; 5,280,163; 5,280,164; 5,280,498;
 5,304,786; 5,304,788; 5,306,900; 5,321,246; 5,324,924; 5,337,361; 5,367,151; 5,373,148; 5,378,882; 5,396,053;
 5,396,055; 5,399,846; 5,408,081; 5,410,139; 5,412,198; 5,418,812; 5,420,411; 5,436,440; 5,444,231;
 5,449,891; 5,449,893; 5,468,949; 5,471,042; 5,478,998; 5,479,000; 5,479,002; 5,479,441; 5,504,322; 5,519,577;
 5,528,621; 5,532,469; 5,543,610; 5,545,889; 5,552,592; 5,557,093; 5,578,810; 5,581,070; 5,589,679; 5,589,680;
 5,608,202; 5,612,531; 5,619,028; 5,627,359; 5,637,852; 5,664,229; 5,668,803; 5,675,139; 5,693,929; 5,698,835;
 5,705,800; 5,714,746; 5,723,851; 5,734,152; 5,734,153; 5,742,043; 5,745,794; 5,754,587; 5,762,516; 5,763,863;
 5,767,500; 5,789,728; 5,808,287; 5,811,785; 5,811,787; 5,815,811; 5,821,519; 5,821,520; 5,823,812;
 5,828,050; 5,850,078; 5,861,615; 5,874,720; 5,875,415; 5,900,617; 5,902,989; 5,907,146; 5,912,450; 5,914,478;
 5,917,173; 5,920,059; 5,923,025; 5,929,420; 5,945,658; 5,945,659; 5,946,194; 5,959,285; 6,002,918; 6,021,947;
 6,047,892; 6,050,491; 6,053,413; 6,056,200; 6,065,678; 6,067,297; 6,068,190; 6,082,621; 6,084,528; 6,088,482;
 6,092,725; 6,101,483; 6,102,293; 6,104,620; 6,114,712; 6,115,678; 6,119,949; 6,131,814; 6,138,180;
 6,142,379; 6,305,885; 6,341,584; 6,344,501; 6,359,483; 6,362,453; 6,363,700; 6,363,918; 6,370,478; 6,383,124;
 6,391,250; 6,409,077; 6,406,581; 6,414,171; 6,414,172; 6,418,500; 6,419,548; 6,423,468; 6,424,035; 6,431,158;
 D430,159; D431,562

rev. 09/00
 European Patent 367,299; 414,281; 367,300; 367,298; UK 2,072,832; France 81/03938; Italy 1,138,713.
 Invention No. 55,358; 62,539; 69,060; 69,187 (Taiwan); No. 1,601,796; 1,907,875; 1,955,269 (Japan).
 72-50875-01
 Revision A - April 2001

